

German tool holders - early used up to 1943

Uchwyty do narzędzi stosowane do 1943 r.
do wszystkich modeli niemieckich
wózów bojowych

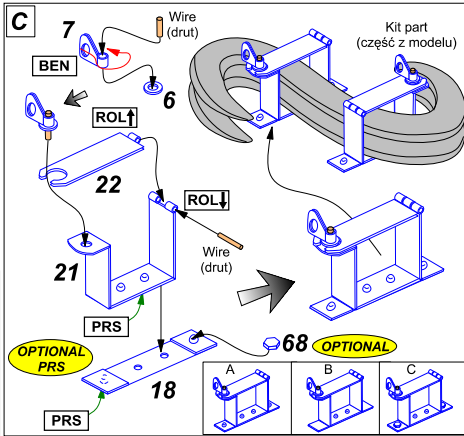
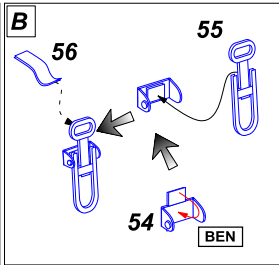
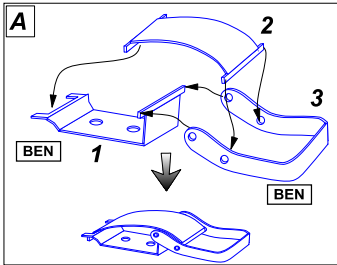
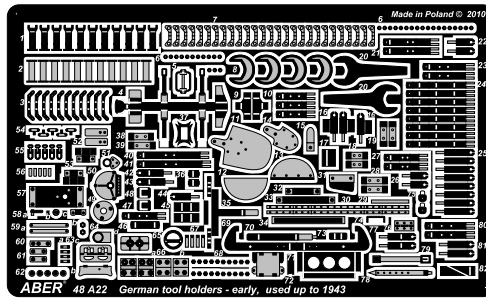
1/48 scale update

ABER[®]

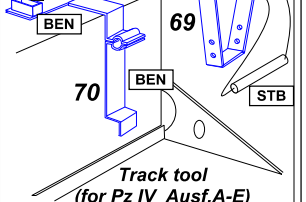
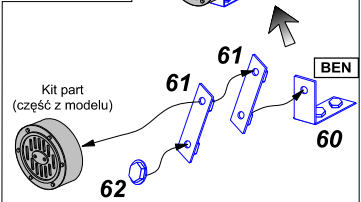
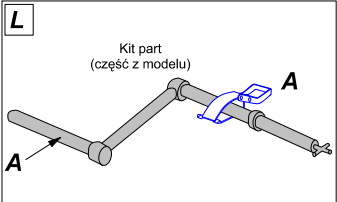
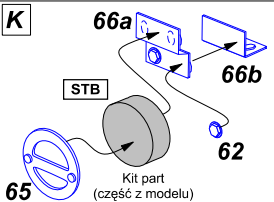
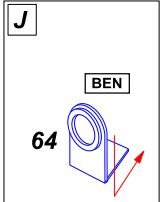
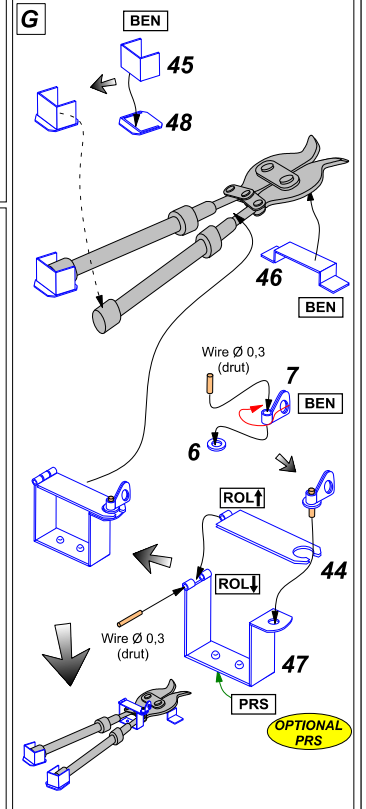
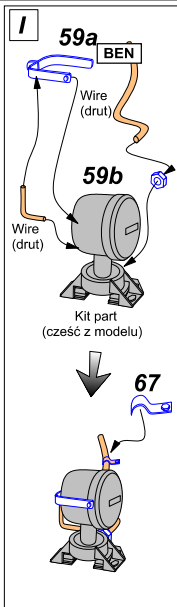
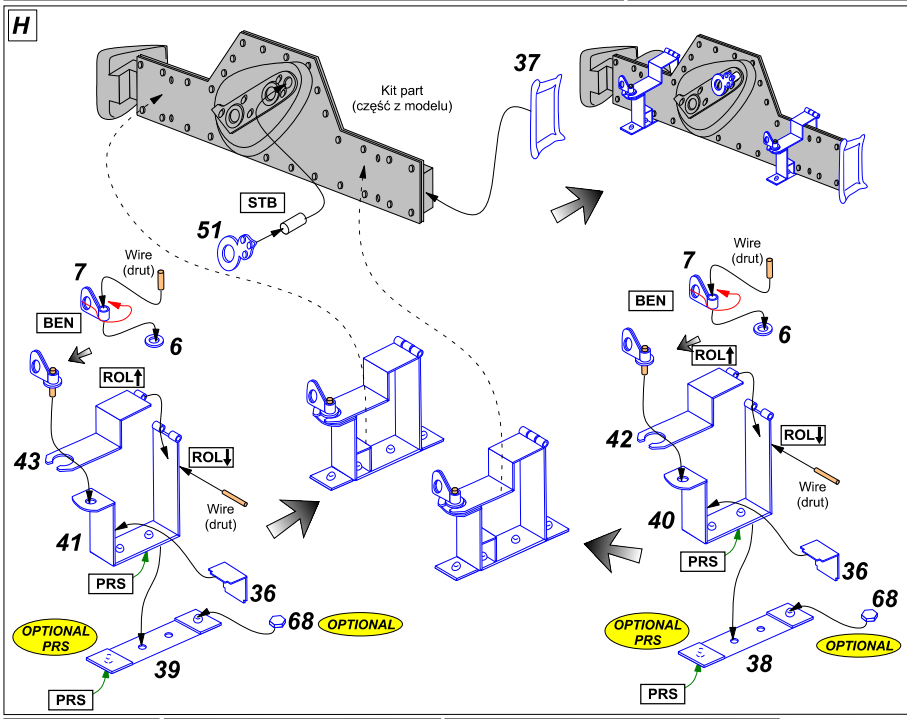
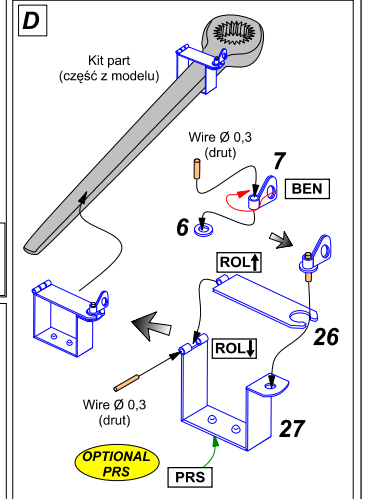
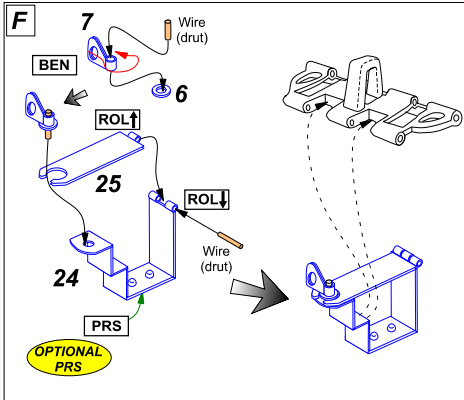
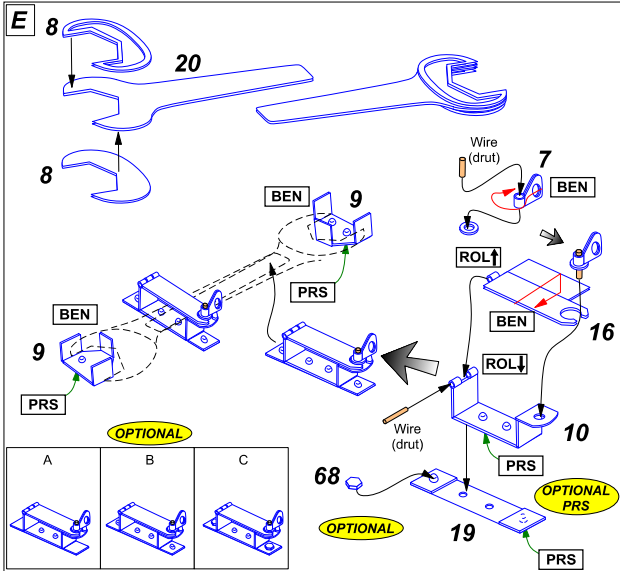
48 A22

WWW.ABER.NET.PL

Made in Poland © 2010



WARNING
Any unauthorized copying, producing and reproducing of ABER company products, or any part thereof, is strictly prohibited and any such action establishes liability for a civil action and may give rise to criminal prosecution.
OSTRZEŻENIE
Jakośkolwiek kopiowanie, produkowanie i reprodukcja wyrobów firmy ABER bez zezwolenia, w całości lub części jest surowo zabronione. Powyższe działania powodują powstanie odpowiedzialności cywilnej oraz mogą spowodować wszczęcie postępowania karnego.



Track tool
(for Pz IV Ausf.A-E)

O **Track tool (for Pz IV Ausf.F-J)**

7, 6, 16, 10, 69, 73

STB, CUT, ROL, PRS

Wire (druć)

OPTIONAL PRS

P

Kit part (część z modelu)

53, 52

R

72, 76

S

5, 4

Reworked kit part (przerobiona część z modelu)

T

76, 74, 79, 78, 71, 82, 30

built from a wood 9x8x3 mm (wykonać z drewna)

U

Reworked kit part (przerobiona część z modelu)

14, 11, 13, 12, 34, 33, 15, 32, 3

V

63a, 63b, 63c, 63d, 62, 66a, 66b

Kit part (część z modelu)

W

Reworked kit part (przerobiona część z modelu)

29, 28, 80, 81, 7, 6, 17

PRS, ROL, Wire (druć)

Y

Reworked kit part (przerobiona część z modelu)

50, 58a, 58b, 58c, 57, 49

Z

Reworked kit part (przerobiona część z modelu)

29, 23, 77, 7, 6, 31

PRS, ROL, Wire (druć)